

Technical
Specifications

VERSATRAX M145

Inspection Crawlers

VersaTrax™ inspection crawlers offer a unique solution for high definition remote visual inspection perfect for examining steel structures across a broad range of applications.

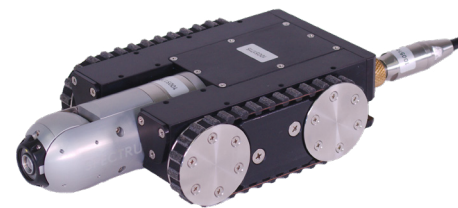
INSPECT WITH PRECISION. RETRIEVE WITH CONFIDENCE.

The VersaTrax™ M145 crawler platform delivers a compact and versatile robotic solution for remote inspection and foreign object retrieval on steel structures. Equipped with front and rear AHD cameras, the system provides clear real-time video for precise navigation and detailed inspection in confined or hazardous environments. Available in dedicated RVI and FOSAR configurations, the VT-M145 enables operators to safely investigate critical assets and recover foreign objects without requiring direct human access.

APPLICATIONS

- Confined space inspection
- Structural inspection of steel assets
- Weld and corrosion evaluation
- Tank and vessel inspection
- Foreign object search and retrieval (FOSAR)
- Preventative maintenance inspections

High-definition robots built for exploring tight spaces within ferrous assets, ensuring strong magnetic adhesion to steel structures.



PRECISION REMOTE VISUAL INSPECTION

The VT-M145-RVI configuration is designed specifically for high-quality remote visual inspection. A front-mounted pan-and-tilt AHD inspection camera allows operators to adjust the viewing angle in real time, providing the flexibility required to closely examine welds, corrosion, structural components, and other areas of interest without requiring repositioning of the crawler, improving inspection efficiency and reducing operation time.

Paired with a rear AHD navigation camera, the system provides comprehensive visual coverage that helps operators position the crawler precisely and maintain clear situational awareness throughout the inspection.

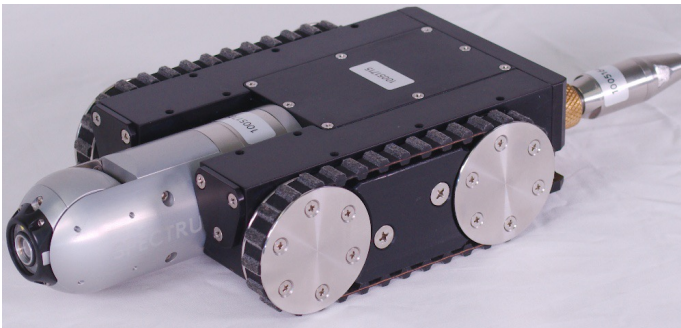


Figure 1: VT-M45-RVI configuration.

FOREIGN OBJECT SEARCH AND RETRIEVAL

The VT-M145-FOSAR configuration is purpose-built for foreign object search and retrieval operations in challenging environments. Equipped with the JAWS 2.0 gripping tool, the crawler enables operators to locate, grasp, and recover debris or foreign objects that may pose operational or safety risks.

The integrated AHD camera within the gripper assembly provides a clear view of the retrieval area, allowing precise manipulation and confirmation of successful object capture. A rear AHD navigation camera ensures safe and controlled maneuvering while approaching and transporting objects.

This configuration allows operators to safely remove foreign objects from confined or hazardous locations without requiring personnel entry into the inspection area.

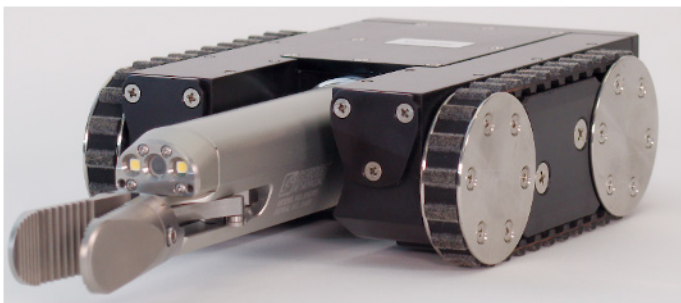


Figure 2: VT-M45-FOSAR configuration.

RELIABLE MAGNETIC PERFORMANCE

The VT-M145 crawler platform combines compact mobility with strong magnetic adhesion to deliver reliable performance on steel structures. The crawler maintains stable traction while traversing vertical walls, curved surfaces, and inverted orientations, allowing operators to reach critical inspection areas with confidence.

KEY FEATURES

Dual AHD Camera System: High-definition AHD cameras positioned at the front and rear of the crawler provide clear real-time video for inspection and navigation.

Magnetic Traction for Steel Surfaces: Powerful magnetic adhesion allows the crawler to securely traverse vertical, horizontal, and inverted ferrous surfaces.

Compact Inspection Platform: The low-profile crawler design enables access to confined spaces and restricted inspection areas.

Pan & Tilt Inspection Capability (RVI Model): The VT-M145-RVI features a front-mounted pan-and-tilt camera, allowing operators to examine surfaces and structures from multiple angles without repositioning the crawler.

Integrated Retrieval Tool (FOSAR Model): The VT-M145-FOSAR includes the JAWS 2.0 gripper, enabling precise foreign object retrieval in difficult-to-access environments.

Durable Industrial Construction: Designed to withstand challenging inspection environments while maintaining reliable performance.

OPTIONAL ADD-ONS

Brass Weights: 6lb or 12lb bolt-on weights to increase traction in horizontal or low magnetic conditions.

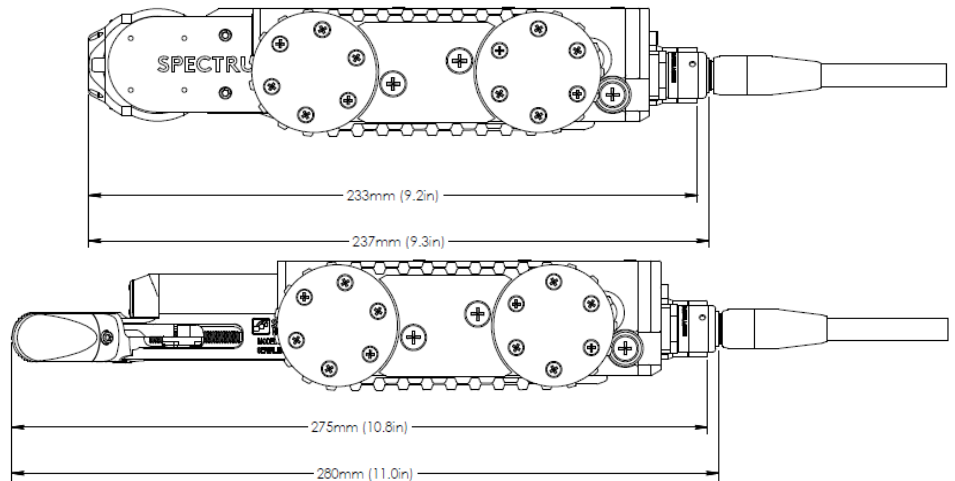
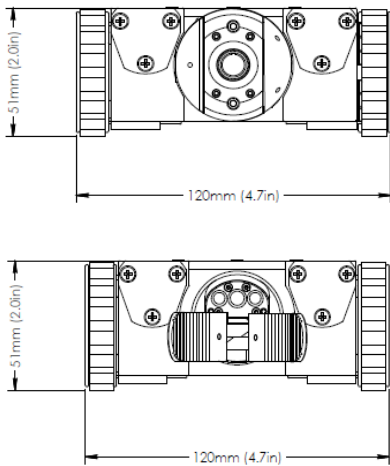
Magnetic Wheels: A wheel that can be bolted to the track hubs, raising the crawler off the asset surface while maintaining magnetic adhesion.

Deep Lug Belts: Raises the crawler 2-4mm.

SPECIFICATIONS

	VT-M145 RVI	VT-M145 FOSAR
Crawler dimensions	233 x 120 x 51 mm (9.2 x 4.7 x 2.0 in)	280 x 120 x 51 mm (11 x 4.7 x 2.0 in)
Maximum tether length	60m (100ft)	60m (100ft)
Maximum speed	2.4m (8ft) per minute	2.4m (8ft) per minute
Vehicle weight	2.3kg (5lb)	2.3kg (5lb)
Vertical payload (tether + load)	3.6kg (8lb)	3.2kg (7lb)
Camera	Spectrum™ 45 PT - AHD	JAWS 2.0 with AHD
Controller	IC100 portable controller	IC100 portable controller
Lighting	Spectrum™ 45 - AHD integrated LED lighting	JAWS 2.0 integrated LED lighting
Depth rating	60m (200ft)	TBD 30m (100ft)
Operating temperature	0°C-40°C (32°F-122°F)	0°C-40°C (32°F-122°F)

STANDARD DIMENSIONS



The information contained in this document is accurate as of the date of publication. Eddyfi Technologies reserves the right to modify any product specifications, features, or availability without prior notice. Actual products may vary from those depicted or described herein. All product names, logos, and brands referenced in this document are the property of their respective owners and may be trademarks or registered trademarks of Eddyfi Canada Inc. or its affiliates in Canada, the United States, and/or other countries. For a full list of trademarks, please visit eddyfi.com/en/trademarks. Nothing in this document shall be construed as granting any license or rights under any intellectual property rights of Eddyfi Technologies or any third party. Eddyfi Technologies is a Previa Business Unit.