



**Technical  
Specifications**

# WEBPIMS

Cloud-based. Real-time. Customizable.

With its user-friendly interface and remote accessibility, webPIMS™ streamlines corrosion and erosion control, enhancing operational excellence and cost-effectiveness.

## SOFTWARE FOR ULTRASONIC CORROSION/EROSION MONITORING

Eddyfi Technologies' webPIMS cloud-based, back-end corrosion/erosion data management software allows users to quickly and easily analyze, set alarms for, trend, map, export, and report metal-loss data and rates.

With webPIMS, you can access data from Eddyfi Technologies' permanently installed monitoring systems (PIMS) devices anywhere with an internet-enabled device including a smartphone. Available 24/7, team members can simultaneously review data in real-time and make critical decisions regarding asset integrity, safety, and operational process conditions.

Hardware compatibility:

- microPIMS® Intrinsically Safe
- smartPIMS® 2.0
- matPIMS®
- microTEMP™
- Offshore microPIMS® Intrinsically Safe
- Offshore smartPIMS® 2.0

**webPIMS, a cutting-edge cloud-based solution, excels in efficient data management, analysis, and trend monitoring. Empowering users to effortlessly collect, store, and analyze vital data, it ensures unwavering asset integrity and safety.**

## FEATURES AND BENEFITS

- **Custom alarms:** Alerts based on pre-defined corrosion rate thickness value.
- **Temperature adjusted data:** All thickness readings are temperature adjusted to ensure consistent and accurate data regardless of process changes, startup, shutdown, or upsets.

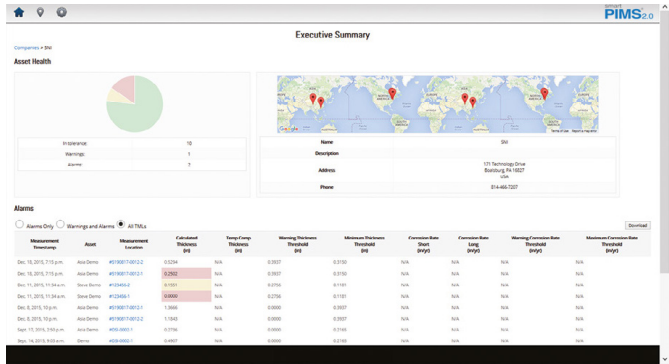


Figure 1: Home page screen showing enterprise-wide macro view, including pie chart with sensor location, status, GPS and latest readings of all sensors.

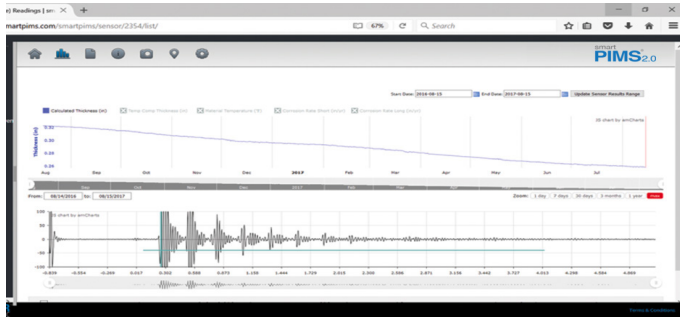


Figure 2: Trending screen graphically shows metal loss versus time, temperature, thickness and digitized RF signals (A-Scans) for each measurement.

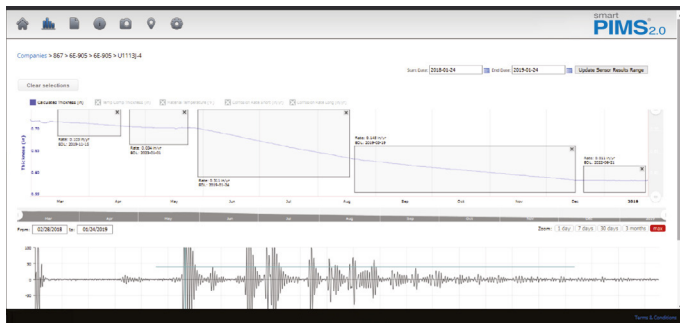


Figure 3: Features like temperature compensation help maximize accuracy of thickness measurements.

- **Effortless data export:** Quickly and easily export data to a XML or CSV file for reporting or mass export to historians/IDMS.
- **Trending:** View and analyze historical data and compare to your operating schedule to optimize process control
- **Optional On-Prem solution:** For those who want to keep their data off the cloud, the On-Prem webPIMS data management system provides a local self-contained/in-the-fence system.
- **Customization:** Add pictures, descriptions, and other notes to show where the sensors are placed and other important information.

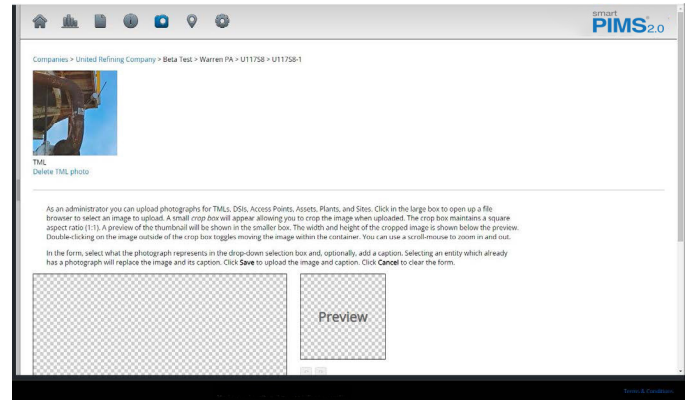


Figure 4: Customization with sensor placement, descriptions and images.

- Cloud-based application with 128-bit AES encryption. (Alternatively available as iPIMS™, an “in-the-fence” local/private server solution with the same software functionality as webPIMS.)
- Hosted on Amazon Web Services by Eddyfi or customer.
- Accessed with login and password.
- Customizable to six layers of hierarchical naming.

The information in this document is accurate as of its publication. Actual products may differ from those presented herein. © 2023 Eddyfi Canada, Inc. webPIMS, smartPIMS, microPIMS, microTEMP, matPIMS, and their associated logos are trademarks or registered trademarks of Eddyfi Canada, Inc. in the United States and/or other countries. Eddyfi Technologies reserves the right to change product offerings and specifications without notice. Eddyfi Technologies is a Previa Business Unit.