

MIZ-21C Quick Start Guide

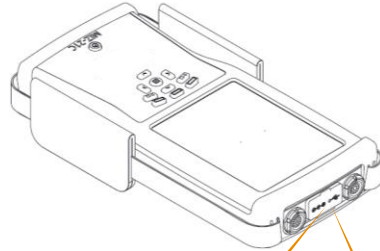


This guide provides seven simple steps to get you up and running.

Consult your user manual for further details on the operation and use of your MIZ-21C system.

www.eddyfi.com
P/N 10057080 Rev C

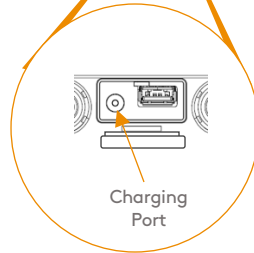
1. Charge Battery



Connect supplied AC adapter to charging port.

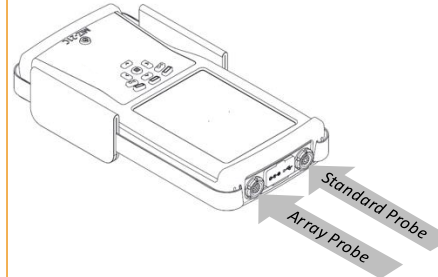


4 Hours



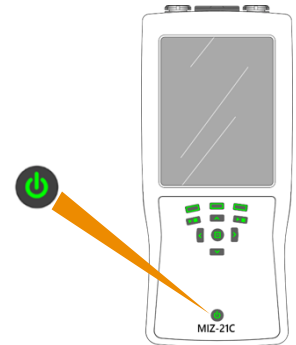
Charging Port

2. Connect Probe



Connect your probe to the appropriate connector based on the probe type.

3. Power Up



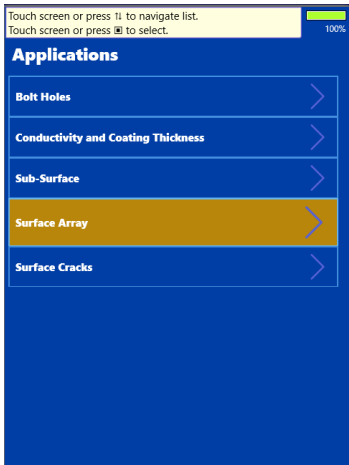
Powering Up the Instrument

With batteries fully charged, momentarily press the power button on the front panel to power up the MIZ-21C. It will take several seconds to boot as the system starts.

Powering Down the Instrument

Press and hold the power button for 2 seconds to power down the MIZ-21C.

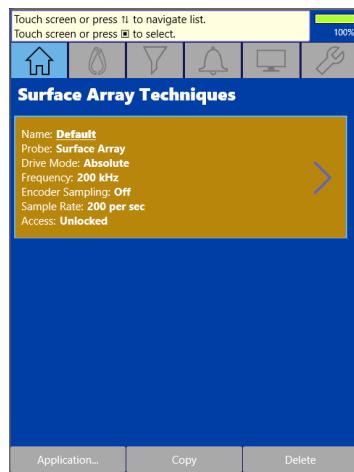
4. Select Application



Application Screen

Select the application category appropriate to the probe connected and the inspection being performed.

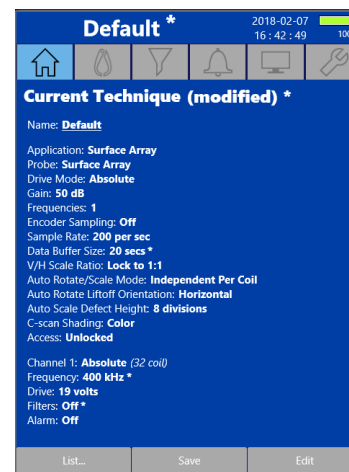
5. Select Technique



Technique Screen

The MIZ-21C comes with a default technique for each application type. Select the technique to show the values loaded.

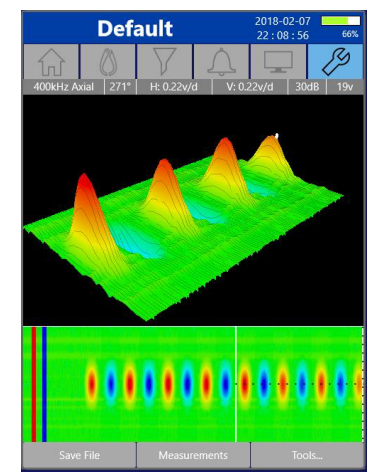
6. Review Technique



Technique Summary Screen

Review values or adjust settings with the edit button in the lower right corner of screen.

7. Acquire Data



Acquiring Data

Press the Start/Stop Acquire button to initiate and halt the acquisition. Consult your user manual for information on reviewing data.