

Technical
Specifications

PAINTBRUSH2

Freedom to move. Accuracy you can trust.
Paints the perfect picture.

PaintBrush2 - An evolution in the field of corrosion inspection for the detection of wall-thickness reductions due to corrosion or erosion.

THE BENCHMARK FOR CORROSION MAPPING

The PaintBrush2 sets a new market benchmark for corrosion mapping. This agile, patent-protected scanner is capable of inspecting both flat and curved surfaces, increasing inspection confidence by delivering 100% area coverage.

Its intuitive operation makes corrosion mapping quick and straightforward. When paired with the Cypher® ultrasonic instrument — which offers a wealth of corrosion-specific features — the PaintBrush2 becomes an even more powerful solution.

Engineered to meet a wide range of demanding inspection requirements, the PaintBrush2 pushes boundaries. The scanner is equipped with magnetic wheels that securely attach to metallic surfaces for easier use. For non-metallic surfaces, these wheels can be easily detached and replaced with dedicated non-magnetic wheels. Two encoded wheels track the scanner's position and orientation in real time, enabling operators to visually confirm coverage and avoid missed areas.

With an extensive operating temperature range, broad probe compatibility, and the freedom to collect data without grid constraints, the PaintBrush2 adapts seamlessly to diverse inspection scenarios. This makes it the most reliable solution available for corrosion and wall-thickness mapping.

PaintBrush2 is easy to use and requires minimum training while incorporating advanced high-performance technology. Don't miss anything and rest assured that the inspection is properly performed.



CORROSION MAPPING WITHOUT BOUNDARIES

The PaintBrush2 is built for unmatched versatility, adapting effortlessly to plates, pipes, elbows, and more. Its compact, ergonomic design allows smooth scanning on curved or flat surfaces, with the ability to inspect pipes as small as 100 mm (4 in) in diameter and larger-diameter elbows.

With an extensive operating temperature range (-35°C to 150°C* / -31°F to 302°F*), freedom from grid constraints, and broad probe compatibility, PaintBrush2 is ready for nearly any inspection scenario.

Supporting advanced techniques including TFM, PWI, and PAUT, the scanner is ideally suited for general corrosion and composite inspections, HTHA, and HIC evaluations.

Compatible probes include the Dual Linear Array, A11 (0L), A12 (0L), and NW1, ensuring inspectors can tackle diverse applications with confidence.

*Note: Intermittent operation, maximum duration of 25 min. at 150°C (302°F)



Figure 1: PaintBrush2 can inspect curved surfaces and pipes with a diameter as small as 100mm (4in).

OPTIMUM POD: FIND CORROSION PITTING

Detects small wall-thickness losses equivalent to 1.6mm (0.06in) round-bottom holes, with coverage ranging from 2mm (0.07in) to 25mm (1in). The solution offers a high probability of detection and, with extended probe compatibility, meets the specific requirements of various inspection scenarios.

POWERED BY ADVANCED ANALYSIS

PaintBrush2 pairs seamlessly with Cypher, bringing real-time acquisition power directly to the inspection. Seeing the location of the probe and data in real time during inspection ensures that the inspection process is performed well, covering the entire target area. Seeing the indications in real time allows you to properly assess the inspection process.

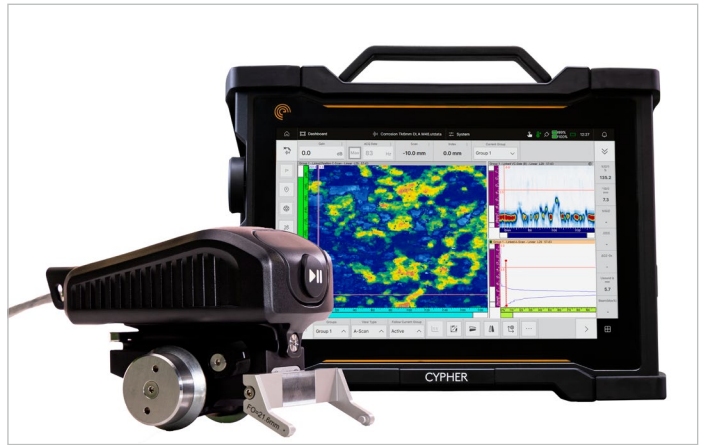


Figure 2: PaintBrush2 coupled with Cypher ultrasonic instrument.



Figure 3: PaintBrush2 with NW1 probe for inspection of composites.



Figure 4: PaintBrush2: Mapping precision without limits.

CONFIDENCE IN EVERY SCAN

- Real-time visualization of probe position and data ensures full area coverage
- Easy to use, requiring minimal training while delivering high performance
- Clear imaging & stitching make it simple to track part condition and evolution

With the PC companion software, inspectors gain access to a powerful suite of advanced analysis tools:

- Real-time and post-processing analysis
- Up to 4 gates and 5-gate detection modes (First Peak/Flank, Max Peak/Flank, Last Peak)
- Detection modes: First Crossing, Maximum, NR Crossing/Max

In addition, UV3 advanced analysis software provides enhanced data handling and reporting capabilities:

- Aberrant point removal
- C-Scan merge & stitching
- Corrosion-specific statistical analysis
- Assisted Analysis — automatically selects and reports indications based on predefined criteria

3D PLOTTING

Corrosion is easily identifiable with UltraVision 3; get 3D plotting for outstanding rendering of corrosion data on specimen parts. The tool can specify the depth of the corrosion, therefore, you know when action must be taken.

Together, PaintBrush2 and Cypher deliver fast, accurate, and reliable corrosion mapping across a wide range of applications.

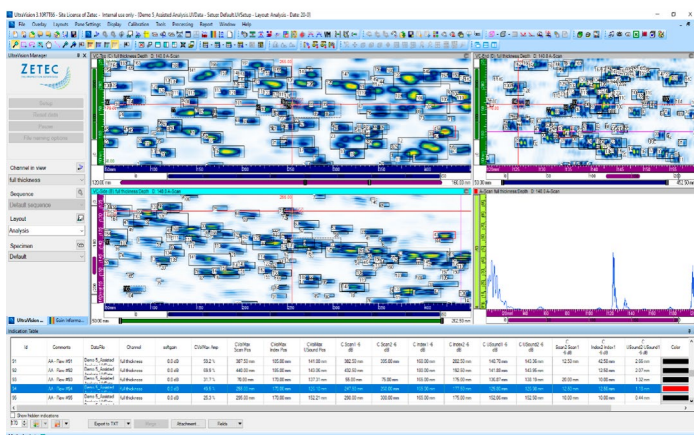


Figure 5: UV3 Advanced Analysis: streamlined data, smarter insights, faster reporting.

SPECIFICATIONS

SCANNER

Dimensions (W x H x D)	83.6mm x 95.3mm x 149.9mm (3.29in. x 3.75in. x 5.90in.)
Weight	950g (2.09lb) without cable
Cable length	5m (16.4ft) & 10m (32.8ft)
Power supply requirement	+5V ± 10% @ 200mA
Button	Pause and restart acquisition or if held for 3 seconds, resets encoder positions to zero (0)
Probe & wedge compatibility	5DL32-CS, 5DL32-CL, A11*, A12* & NW1 - Please enquire for specific requirements

INSPECTION DIAMETERS AND POSITIONING

Pipe minimum diameter - horizontal and vertical	101.6mm (4.0in)
Pipe maximum diameter	1219.2mm (48in) or flat
Maximum position deviation	±1.4mm/1000.0mm typ.

ENVIRONMENTAL

Examination surface operating temperature	-35°C to 150°C (-31°F to 302°F) <i>Note: Intermittent operation, maximum duration of 25 min. at 150°C (302°F) with ambient temperature at 22°C (72°F).</i>
Operating temperature	-35°C to 75°C (-4°F to 167°F) with relative humidity up to 95% non-condensing
Storage temperature	-40°C to 75°C (-40°F to 167°F)
IP Rating	Designed for IP65 (pollution degree 2)
European conformity	CE compliant

*A11 & A12 Probe compatibility when used with - WSA11-A12-0L-FLAT-20mm-IHC

The information contained in this document is accurate as of the date of publication. Eddyfi Technologies reserves the right to modify any product specifications, features, or availability without prior notice. Actual products may vary from those depicted or described herein. All product names, logos, and brands referenced in this document are the property of their respective owners and may be trademarks or registered trademarks of Eddyfi Canada Inc. or its affiliates in Canada, the United States, and/or other countries. For a full list of trademarks, please visit eddyfi.com/en/trademarks. Nothing in this document shall be construed as granting any license or rights under any intellectual property rights of Eddyfi Technologies or any third party. Eddyfi Technologies is a Previa Business Unit.