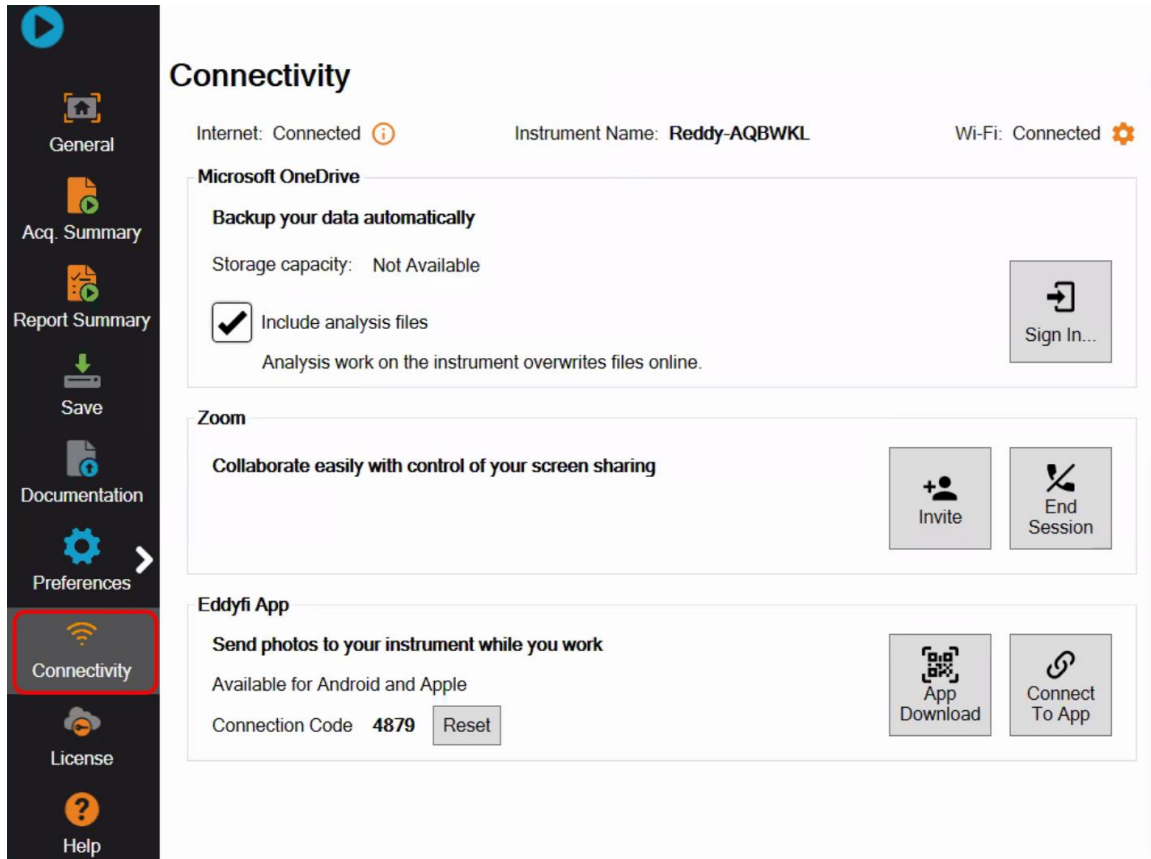


# Getting Started with **CONNECTIVITY TOOLS**



## CONNECTIVITY SECTION

The **Connectivity** section contains different tools aimed at enhancing collaboration through technology and simplifying field inspections.



The screenshot shows the 'Connectivity' section of the instrument interface. On the left is a dark sidebar with navigation icons: a play button, a home icon, 'General', a document icon, 'Acq. Summary', a document with a checkmark icon, 'Report Summary', a download icon, 'Save', a document with a checkmark icon, 'Documentation', a gear icon, 'Preferences', a Wi-Fi icon, 'Connectivity' (highlighted with a red box), a license icon, 'License', and a question mark icon, 'Help'. The main content area is titled 'Connectivity' and shows the instrument name 'Reddy-AQBWKL'. It features three main sections: 1. 'Microsoft OneDrive' with a 'Backup your data automatically' header, 'Storage capacity: Not Available', a checked 'Include analysis files' checkbox, and a 'Sign In...' button. 2. 'Zoom' with the text 'Collaborate easily with control of your screen sharing' and 'Invite' and 'End Session' buttons. 3. 'Eddyfi App' with the text 'Send photos to your instrument while you work', 'Available for Android and Apple', 'Connection Code 4879', and 'App Download' and 'Connect To App' buttons.

## MICROSOFT ONEDRIVE

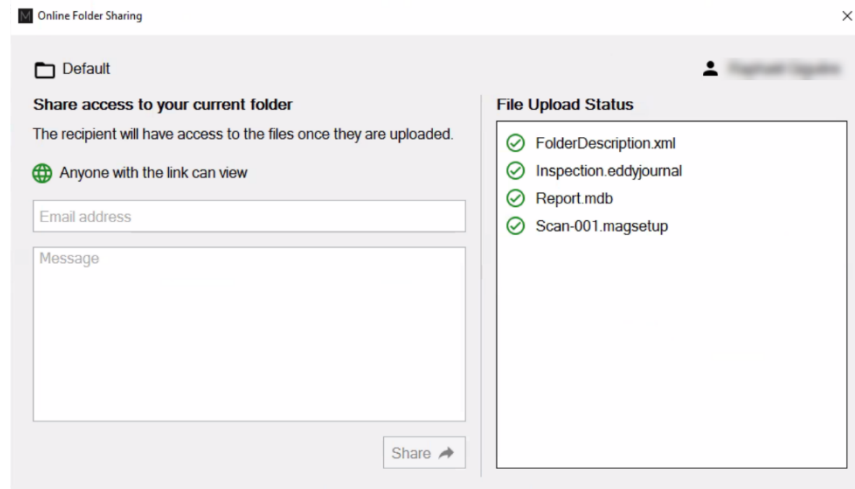
The goal of this tool is to allow backing up your data automatically as you are doing your inspection, enabling data sharing with your colleagues for troubleshooting and further analysis. It also allows you to start analyzing data on your laptop as soon as you acquire it.

To sync your data to your OneDrive:

- 1- In the backstage of your instrument, from **the Connectivity** tab, connect to the internet.
- 2- In the **Microsoft OneDrive** menu, press **Sign In**. A window pops up; by clicking OK, you accept that all the files from the current folder will be uploaded.
- 3- After signing in, the content of your current inspection folder gets saved automatically into your account. After upload is complete, you can see the green check on the cloud icon. This means that all your data files have been synced to your OneDrive account.

To share the data with someone, here are the steps to follow:

- 1- Press the cloud icon on the top right and click **Share**.
- 2- On the right side (**File Upload Status**), you have all your data files. The green check on them means they have already been uploaded to your OneDrive account.
- 3- On the left side, enter the email address of your colleague. You can also write a message to attach in your email.
- 4- Click **Share**.



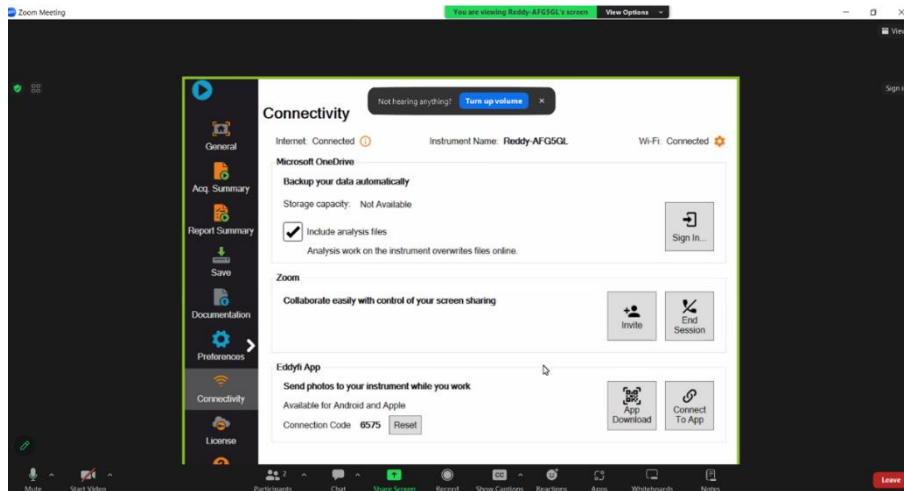
## ZOOM

For real-time global support, Zoom connectivity allows you to connect with expert analysts around the world for troubleshooting, to receive support, or to conduct remote sessions effortlessly, enhancing your capabilities and efficiency.

This feature enables users to initiate a Zoom video conference call directly from your instrument and send an invitation to any number of email addresses. People joining the call will not only see the screen of your instrument in real-time but will also be able to request its control, allowing them to navigate through all the menus and acquired data files, and perform analysis themselves.

To let someone connect to your instrument, it must have Wi-Fi enabled. Then, go to the Zoom section and click on invite. A window will appear allowing you to enter the email address. After a few seconds, the recipient will get a zoom invitation by e-mail and will be able to join the call simply by clicking on the link. To be able to speak with them, you can also invite yourself to the call and join from your cellphone.

Anyone can request control of the screen by using the menu at the top, just like on any Zoom meeting. You can end the meeting by clicking on End Session.



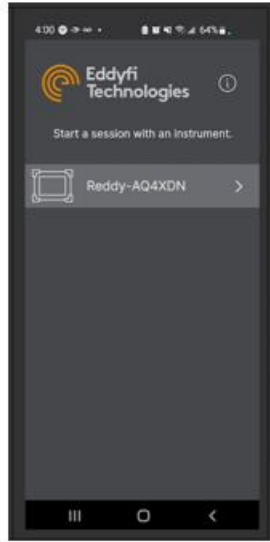
## EDDYFI APP

The **Eddyfi App** allows you to connect your instrument to your mobile device enabling you to capture photos, write notes and add them to your inspection folder.

The Eddyfi App is available on both Apple and Android devices. To download the app, search "Eddyfi" in your mobile app store or use the App Download button in the connectivity tab to scan the QR code.

To connect your Eddyfi App to your instrument, both the instrument and the mobile device must have Wi-Fi enabled. Either connect your instrument to your mobile's hotspot or connect both devices to the same Wi-Fi network. Stand near your instrument, open the app and your instrument will appear in the list. Once you have selected your instrument in the list, enter the connection code located at the bottom of the connectivity tab of the instrument to secure connection.

The app allows you to add pictures and comments to your inspection, scans, and indications. Simply use the orange button on the right bottom corner of your app to take a picture and it will be sent automatically to your instrument.



The information in this document is accurate as of its publication. Actual products may differ from those presented herein.

© 2024 Eddyfi Canada, Inc. Ectane, and their associated logos are trademarks or registered trademarks of Eddyfi Canada, Inc. in the United States and/or other countries. Eddyfi Technologies reserves the right to change product offerings and specifications without notice. Eddyfi Technologies is a Previa Business Unit.

[www.eddyfi.com](http://www.eddyfi.com)

[info@eddyfi.com](mailto:info@eddyfi.com)



**Eddyfi  
Technologies**  
Beyond current